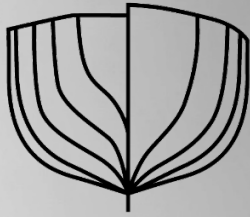


NAVAL ARCHITECTS - ENGINEERS - MARINE SURVEYORS
DARWIN PERTH

SERVICING NORTHERN AUSTRALIA, WESTERN AUSTRALIA AND INTERNATIONAL



KEIL MARITIME



Company Profile and Capability Statement

Revision	26/03/2026
Status	Information

Copyright © 2026 Keil Maritime Pty. Ltd. This document may only be used by the client (and any other person who Keil Maritime has agreed can use this document) for the purpose for which it was prepared and must not be used by any other person or for any other purpose.

Keil Maritime Pty Ltd

+61 (0) 8 8967 1661

admin@keilmaritime.com

10/128 Coonawarra Road

Winnellie NT 0812

Australia

keilmaritime.com

ABOUT KEIL MARITIME

Keil Maritime is an Australian owned and operated business, specialising in naval architecture and marine surveying. We offer a full suite of services to assist vessel owners and operators achieve safe and efficient operations, from design of new vessels, modification and repair of existing vessels, mooring and tow analysis. Our services are provided in full compliance with applicable regulations.

Our team consists of experienced naval architects and accredited surveyors who are supported by a professional team of administrators who all have extensive knowledge in marine policies. Our client base is vast, including operators of large fleets, defence assets, workboats, tourism operators and other specialty operations.

The company was founded in 2013 in Darwin, Northern Territory, driven by the eventual privatisation of marine surveying services across the country. Our head office is located in Darwin, with engineers also in Perth and Melbourne. We are always available to attend any vessel nationwide, especially in remote locations and overseas.

Our clients include Serco Defence, Paspaley Pearling Company, KBR, TAMS, Bhagwan Marine, Darwin Port, Milton Alternative Lifting and many more.

We have strong relationships with local boat builders and fabricators across Australia and work closely with other vessel designers to ensure their designs are compliant and practical.

CAPABILITIES

The Keil Maritime team consists of naval architects, accredited surveyors and support administrators. We offer a very broad range of capabilities to assist within the maritime industry, from new builds, modification of existing vessels, management of fleets or project management.

Naval Architecture

- Vessel refits and modifications (e.g. addition or removal of equipment, lengthening of vessels, structural changes)
- Repair plans and technical specifications
- Engineering change support and management
- New vessel design (all sizes and types)
- Docking plans
- Mooring design, assessment and certification
- Stability tests and reports (inclining and lightship measurements)
- Kit boats
- Speed, resistance and powering predictions
- Australian builders plate calculations and supply
- Navigation aid design

Engineering

- Mechanical equipment design and analysis in steel and aluminium
- Heavy lift equipment design and analysis
- Ramps, walkways, gangways
- Third party review
- Chartered engineer services
- 2D and 3D drafting services

Vessel Surveys and Support

- Team of fully accredited AMSA Marine Surveyors with the full range of categories covered
- Initial, transitional, renewal, periodic and load line surveys including conversion of flagged and class vessels to Australian domestic commercial vessels
- Fleet survey management
- AMSA liaison including clearing of AMSA defect, prohibition and improvement notices
- Safety Management Systems in compliance with Marine Order 504
- Documentation and fleet safety audits

Consultation and witnessing

- Insurance reports and investigation
- Condition reports and Valuations
- Expert witness services
- Owners' representative services
- Risk assessments
- Class consultation
- Suitability Analysis Reporting

KEY PERSONNEL

Daniel Keil - Company Director

Darwin, NT

Naval Architect | Principal Surveyor

BEng (Naval Architecture) | AMSA AMS (AMSA accredited marine surveyor), Royal Institute of Naval Architects (RINA)

Daniel founded Keil Maritime in 2013 ahead of the closure of Marine Safety Branch NT. He continues to play an integral part of the company.

Daniel has extensive and varied experience in the field of marine surveying, including investigation, expert witness and consulting services for vessels. This included more than seven years experience as a government marine surveyor in the Northern Territory.

He previously worked as a Naval Architect as a contractor with Defence's Armidale Class Patrol Boats. This role involved managing a rigorous hull survey programme for the fleet, oversaw and advised on repair plans and engineering changes.

Hamish Stevens

Perth, WA

Senior Naval Architect | *AMSA AMS, IEAUST*

BEng (Nav. Arch.) | MRINA, Ceng, MIEAust, CPEng NER APEC Engineer IntPE(Aus) AMSA AMS

Hamish joined Keil Maritime in 2022 bringing in 10 years of small consultancy experience. He is experienced in structural design and analysis of steel, aluminium, FRP and polyethylene, major vessel modifications and refits, machinery and systems design and a wide range of other aspects of naval architecture and engineering.

As an AMSA AMS Hamish is also well versed in the requirements of NSCV and Marine Orders.

Jason Nichols

Darwin, NT

Naval Architect | Mechanical Engineer

BEng (Nav. Arch.) & BEng (Mech.)

Jason has had extensive experience working as a mechanical engineer prior to attaining his Bachelor of naval architecture in 2023. His experiences include project management and has extensive knowledge in non-destructive testing. Jason's role is design focused, covering all aspects of vessel design and analysis of structures.

Our team also includes one junior engineer and three reporting & administration assistants.

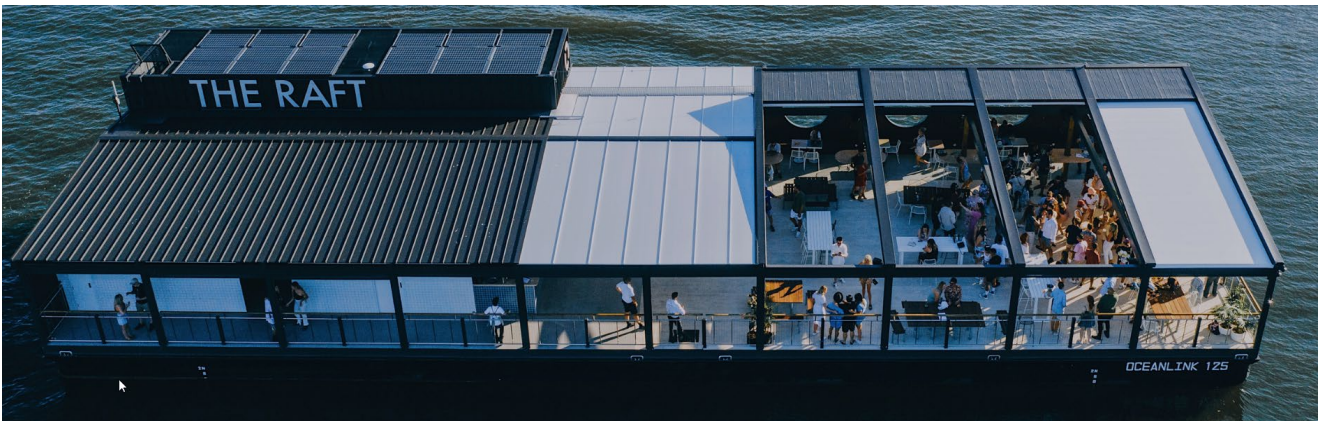
KEY PROJECTS

HMAS Coonawarra pontoons (Darwin, NT)

Working with a design of temporary works (Engineering and Drafting), fabrication inspections and quality control, mooring design, update of as-built drawings and engineering change management.



The Raft Perth – Full Delivery – 36.5m floating pontoon Class 1E.



Working closely with the owners, shipyard and third party contractors to convert an old barge into a fully compliant, permanently moored bar and event space located on the Swan River, Perth.

Anindilyakwa Land Council – Full delivery – Several Specialty Aquaculture Vessels

Keil Maritime worked closely with a team of scientists to design, and manage the fabrication and delivery of the vessels to Groote Elyandt, NT.

Initial DCV surveys

Keil Maritime are experienced at undertaking initial surveys for a wide range of domestic commercial vessels. We work closely with owners and designers of fishing vessels, touring vessels, unmanned vessels and other types to ensure they are built in compliance with national regulations.

Other Engineering Projects

Structural assessment, compliance testing in line with Australian standards and full certification of specialised crocodile cages.

Various gangway designs for commercial use

Design of a pile service barge with integrated scissor lift

Full engineering and assessment for bow doors modifications on barges.



Crocodile Cages– Used for crocodile egg collecting in remote NT



USV Fremantle 1 – 12m unmanned survey vessel, built in Perth, operating from Perth.



NT01 - 12m tour vessel, built in Darwin for Katherine Gorge NT